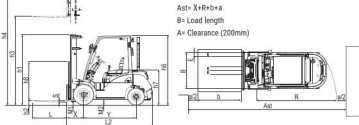


# SPECIFICATION

8800~11000 lbs

	ZF0 40	ZF0 40	ZF0 45	ZF0 45	ZF0 50	ZF0 50
<b>CHARACTERISTICS</b>						
Capacity	Q Load	8800	8800	9900	9900	11000
Load center	C Distance	24	24	24	24	24
Power type	Control	Conventional LPS, Electric	Conventional LPS	Conventional LPS	Conventional LPS	Conventional LPS
Operation type	Propulsion	Stand, Sit	Stand, Sit	Stand, Sit	Stand, Sit	Stand, Sit
Type type	Hydraulic	Hydraulic	Hydraulic	Hydraulic	Hydraulic	Hydraulic
Service weight	Wt	16500	15400	16400	15800	16000
<b>DIMENSIONS</b>						
Unit 3	N3	199	189	189	189	199
Unit 2	N2	0	0	0	0	0
Unit 1	N1	58.7 / 69.7	58.4	58.4	58.4	48.7
Unit 0	N0	48	48	48	48	48
Fork size	Thickness (mm/inch)	2.0 x 5.9 x 48	2.0 x 5.9 x 48	2.0 x 5.9 x 48	2.0 x 5.9 x 48	2.4 x 5.9 x 48
Max lifting cap	Forward lift (kg/lb)	97 / 121	87 / 121	87 / 121	87 / 121	87 / 121
Overall dimensions	Length to base of fork	1219	1219	1219	1219	1217
	B Total width	58.7 / 69.7	58.7 / 69.7	58.7 / 69.7	58.7 / 69.7	58.7 / 69.7
	H1 Mast height base end	94.0	94.0	94.0	94.0	94.0
	H4 Mast height extended	235.8	235.8	235.8	235.8	237.8
	H5 Overhead guard height	89	89	89	89	89
	H7 Seat height	92	92	92	92	92
Turning radius	R	106	106	113	113	118
Load distance	X From center of front axle	22.8	22.8	22.8	22.8	23.7
Axle width	Ast For load 800/1200 / 1000/1200	158.9 / 176.8	168.9 / 176.8	175.8 / 183.7	175.8 / 183.7	187.1 / 188.9
<b>CHASSIS</b>						
Tire size	Number front/rear (X driven)	2X / 2	2X / 2	2X / 2	2X / 2	2X / 2
	Front	300-15-13PR	300-15-13PR	300-15-13PR	300-15-13PR	300-15-13PR
	Rear	7.00-15-13PR	7.00-15-13PR	7.00-15-13PR	7.00-15-13PR	7.00-15-13PR
Wheelbase	W	183	183	183	183	183
Ground clearance	m1 Center of lines front	45.7 / 54.3	45.7 / 54.3	45.7 / 54.3	45.7 / 54.3	45.7 / 54.3
	m2 Center of lines rear	46.9	46.9	46.9	46.9	46.9
Service brake	Operation control	Hydraulic	Hydraulic	Hydraulic	Hydraulic	Hydraulic
Parking brake	Operation control	Hand	Hand	Hand	Hand	Hand
<b>POWER</b>						
Battery	Type	EFB 130031-SMF	EFB 130031-SMF	EFB 130031-SMF	EFB 130031-SMF	EFB 130031-SMF
	Voltage	12	12	12	12	12
	Capacity	85	85	85	85	85
	Dimension (LxWxH)	12.0 x 6.8 x 8.0	12.0 x 6.8 x 8.0	12.0 x 6.8 x 8.0	12.0 x 6.8 x 8.0	12.0 x 6.8 x 8.0
	Weight	46.4	46.4	46.4	46.4	46.4
Engine	Manufacturer	KUBOTA	KUBOTA	KUBOTA	KUBOTA	KUBOTA
	Model	U15C1	U15C1	U15C1	U15C1	U15C1
	Rated speed	2400	2400	2400	2400	2400
	Rated Output	55.4	70	55.4	70	55.4
	Oil/coolant no. discharge	4 / 3331	4 / 3709	4 / 3331	4 / 3331	4 / 3709
Transmission	Type	PowerShift	PowerShift	PowerShift	PowerShift	PowerShift
	Stage Prod./Rev	no.	2/1	2/1	2/1	2/1

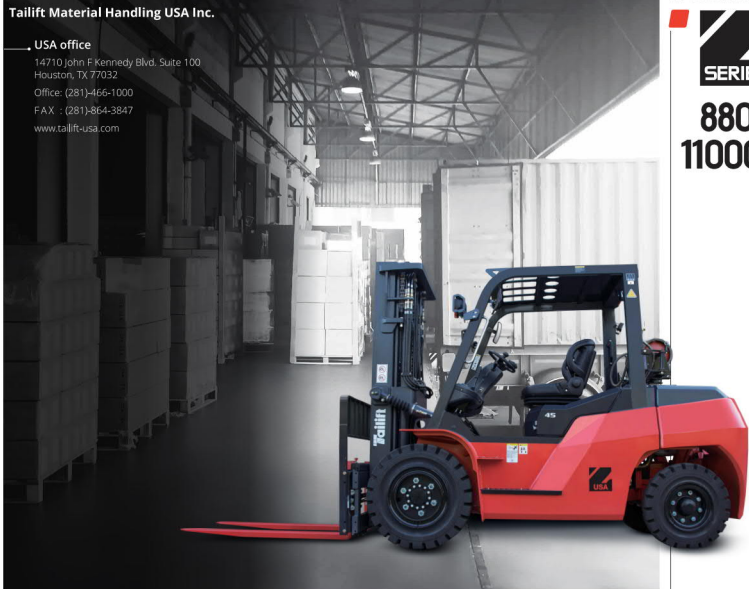
\*This is only for reference and not subject to notice in advance if there is any modification. DOC. S/N: DEB092-02-USA  
Service weight may vary with part upgrades and product improvements.



Tailift Material Handling USA Inc.

USA

USA office  
14710 John F Kennedy Blvd., Suite 100  
Houston, TX 77032  
Office: (281)-466-1000  
FAX: (281)-864-3847  
www.tailift-usa.com



IC COUNTERBALANCE TRUCK

SERIES

8800~11000 lbs



DOC. S/N: DEB092-02-USA

Tailift TOYOTA INDUSTRIES GROUP

# TAILIFT FORKLIFT

## FEATURES

8800~11000 lbs

NEW Z SERIES counterbalance trucks from Tailift

Now with **Kubota engines** that comply with the latest EPA Tier 4 + EU Stage V regulations. The advanced EPA Tier 4 technology produces **cleaner emissions and improved performance** to exceed customer's expectations, in both diesel and LPG forklift trucks.

This improved Z SERIES has been designed for increased durability, productivity, and safety. **Equipped with a new transmission** needed for simple operation and easy maintenance! The brand new **steering Z SERIES** meets customer's essential needs in terms of quality, productivity, and safety!



## NOW WITH KUBOTA ENGINES

### EMISSIONS COMPLIANCE

Created to satisfy rigid EPA Tier 4 + EU Stage V emissions regulations while running cleaner and more effectively.

### HIGH PERFORMANCE LOW FUEL CONSUMPTION ENGINES

The engine's original equipment runs with low emissions. Now with additional post-processing regeneration efficiency!

### OUTSTANDING PERFORMANCE

Engines with stable loading idle, full torque output, and high resistance to stalling at low speeds.

### INCREASED STABILITY

With a built-in high-pressure common rail and fuel injectors, these engines produce less noise and vibrations.

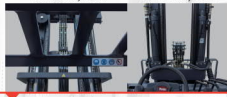
### EASY MAINTENANCE

The Kubota engine is highly integrated and has a compact engine structure. Parts to be maintained are arranged on one side for convenient maintenance.

### ADVANCED DPF TECHNOLOGY

Diesel Particulate Filters (DPF) are essential to meeting EPA emission regulations. With many years of research and improvements, engines now enable automatic regeneration even at low velocity intake.

### Clear Visibility Above



**CLEAR VISIBILITY FOR OPERATORS**  
Wide view mast with clear visibility above, ahead, and behind.

### Clear Visibility Ahead



**NEW LED LIGHT SYSTEM**  
These power efficient and sleek new LED lights cover a wider range, are brighter, and last longer than our previous designs!



**REAR LED LIGHTS**  
The new rear LED visibility light brightens the area behind the forklift, making operation while backing up and squeezing through tight spaces easier. Rear LED combination lights make the forklift more visible to others.



**HEAVY DUTY CHASSIS**  
Our heavy duty chassis with no-bolt design provides extra strength for more protection! Making forklifts more suitable for a wide variety of working environments.



**MULTIFUNCTIONAL INSTRUMENT PANEL**  
This easy to read instrument panel is installed between the steering wheel and left front side window! It conveniently displays the status of the forklift's performance without interfering with steering wheel operations.



**ENLARGED OPERATION SPACE**  
This spacious floor plan is optimally designed for operational control! Wide-open foot space makes for easier and more relaxed movement for forklift operation.



**ADJUSTABLE STEERING WHEEL COLUMN**  
Easily tilted and adjusted to provide ideal operating position and increased comfort!



**COMFORTABLE SEAT**  
Our improved seat design can be easily adjusted and prioritizes comfort! The seat easily moves forward and back with an adjustable backrest and retractable seat belt.



**NON-SLIP ENTRY STEP**  
Increased foot space and non-slip grip make it easier to get on and off the forklift.



**REAR ASSIST GRIP WITH HORN BUTTON**  
NEW rear grip handle equip with a horn button for easy access while traveling in reverse. Now on all new Z SERIES forklifts!